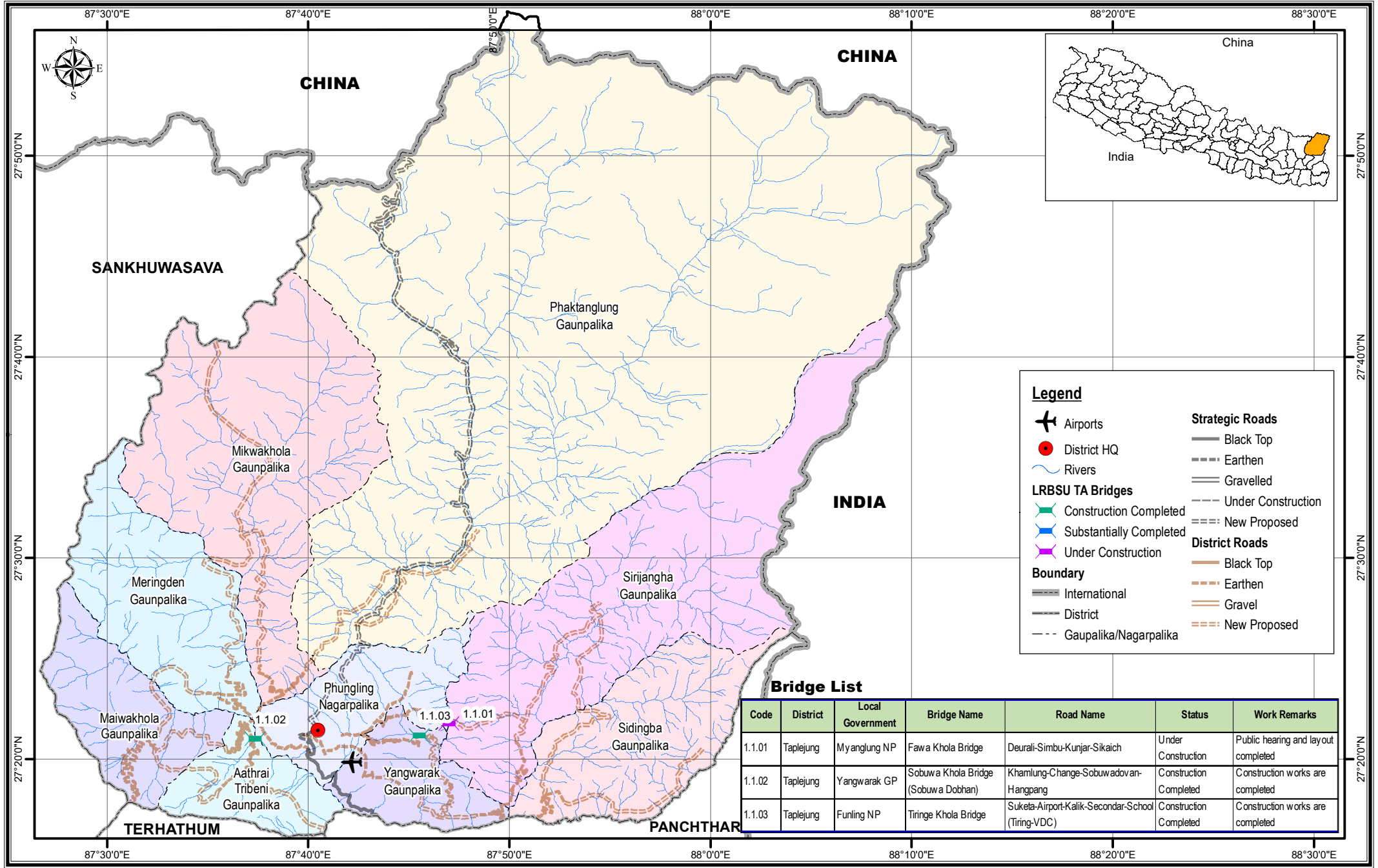


# Bridge Inventory Map

## Province - 1

## Taplejung District



| Code   | District  | Local Government | Bridge Name                         | Road Name   | Status                 | Work Remarks                        |
|--------|-----------|------------------|-------------------------------------|---|------------------------|-------------------------------------|
| 1.1.01 | Taplejung | Myanglung NP     | Fawa Khola Bridge                   | Deurali-Simbu-Kunjar-Sikaich                      | Under Construction     | Public hearing and layout completed |
| 1.1.02 | Taplejung | Yangwarak GP     | Sobu a Khola Bridge (Sobu a Dobhan) | Khamlung-Change-Sobu wadovan-Hangpang             | Construction Completed | Construction works are completed    |
| 1.1.03 | Taplejung | Funling NP       | Tiringe Khola Bridge                | Suketa-Airport-Kalik-Secondar-School (Tiring-VDC) | Construction Completed | Construction works are completed    |



Local Roads Bridge Support Unit (LRBSU)  
Manbhawan, Lalitpur

Date: October 2020