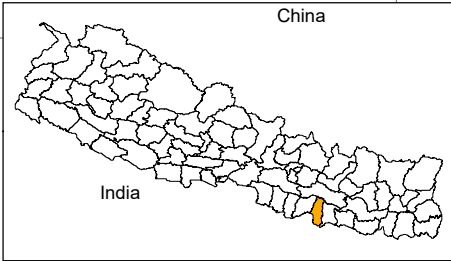
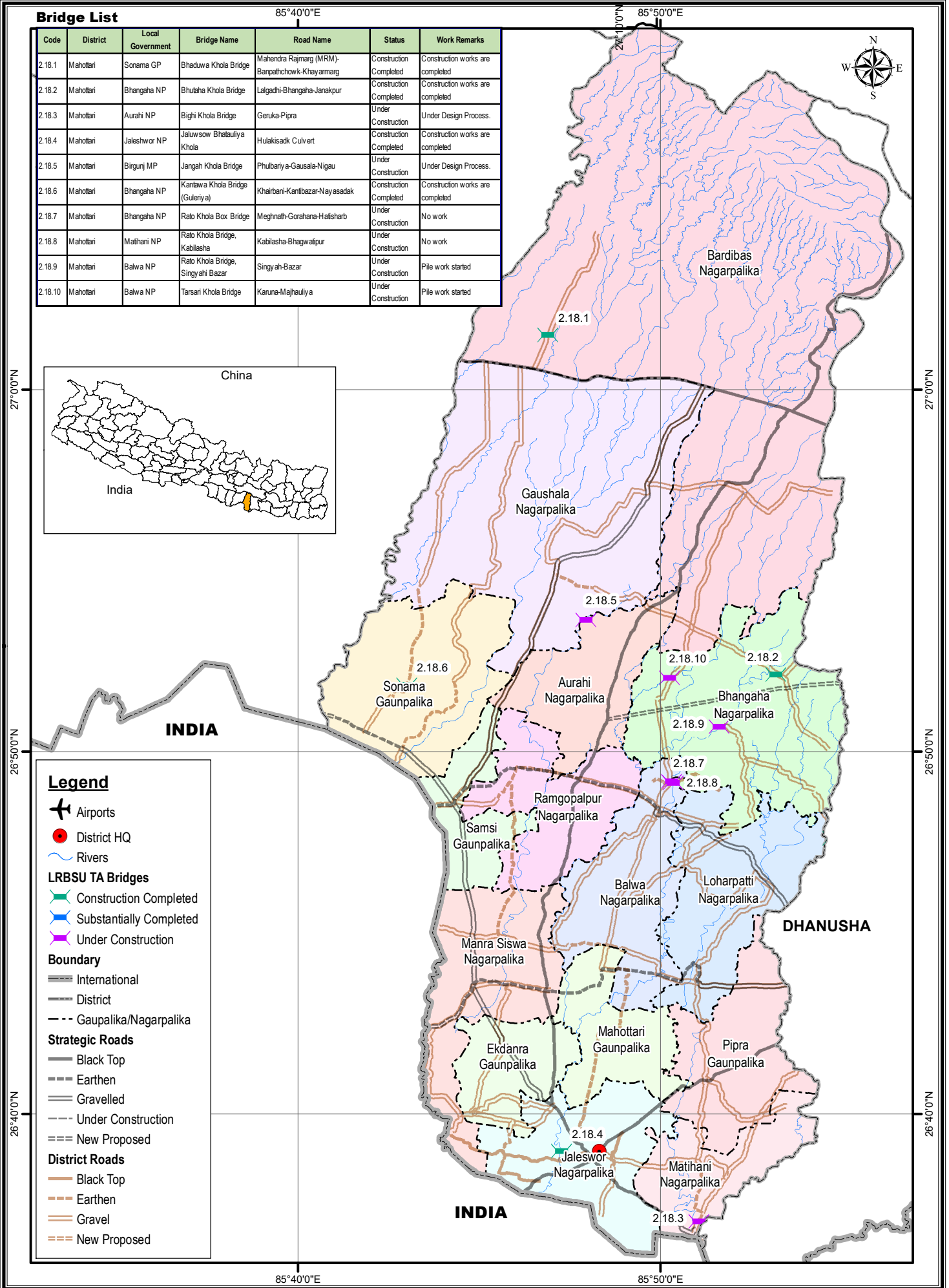


Bridge List

Code	District	Local Government	Bridge Name	Road Name	Status	Work Remarks
2.18.1	Mahottari	Sonama GP	Bhaduwa Khola Bridge	Mahendra Rajmarg (MRM)-Banpathchowk-Khayamarg	Construction Completed	Construction works are completed
2.18.2	Mahottari	Bhangaha NP	Bhutaha Khola Bridge	Lalgadhi-Bhangaha-Janakpur	Construction Completed	Construction works are completed
2.18.3	Mahottari	Aurahi NP	Bighi Khola Bridge	Geruka-Pipra	Under Construction	Under Design Process.
2.18.4	Mahottari	Jaleswor NP	Jalawsow Bhataliua Khola	Hulkisadk Culvert	Construction Completed	Construction works are completed
2.18.5	Mahottari	Birgunj MP	Jangah Khola Bridge	Phulbariya-Gausala-Nigau	Under Construction	Under Design Process.
2.18.6	Mahottari	Bhangaha NP	Kanlawa Khola Bridge (Guleriya)	Khairbani-Kantibazar-Nayasadak	Construction Completed	Construction works are completed
2.18.7	Mahottari	Bhangaha NP	Rato Khola Box Bridge	Meghnath-Gorahana-Hatisharb	Under Construction	No work
2.18.8	Mahottari	Mathani NP	Rato Khola Bridge, Kabilasha	Kabilasha-Bhagwalpur	Under Construction	No work
2.18.9	Mahottari	Balwa NP	Rato Khola Bridge, Singyahi Bazar	Singy ah-Bazar	Under Construction	Pile work started
2.18.10	Mahottari	Balwa NP	Tarsani Khola Bridge	Karuna-Majhailiua	Under Construction	Pile work started



Legend

- Airports
- District HQ
- Rivers
- LRBSU TA Bridges**
 - Construction Completed
 - Substantially Completed
 - Under Construction
- Boundary**
 - International
 - District
 - Gaupalika/Nagarpalika
- Strategic Roads**
 - Black Top
 - Earthen
 - Gravelled
 - Under Construction
 - New Proposed
- District Roads**
 - Black Top
 - Earthen
 - Gravel
 - New Proposed

