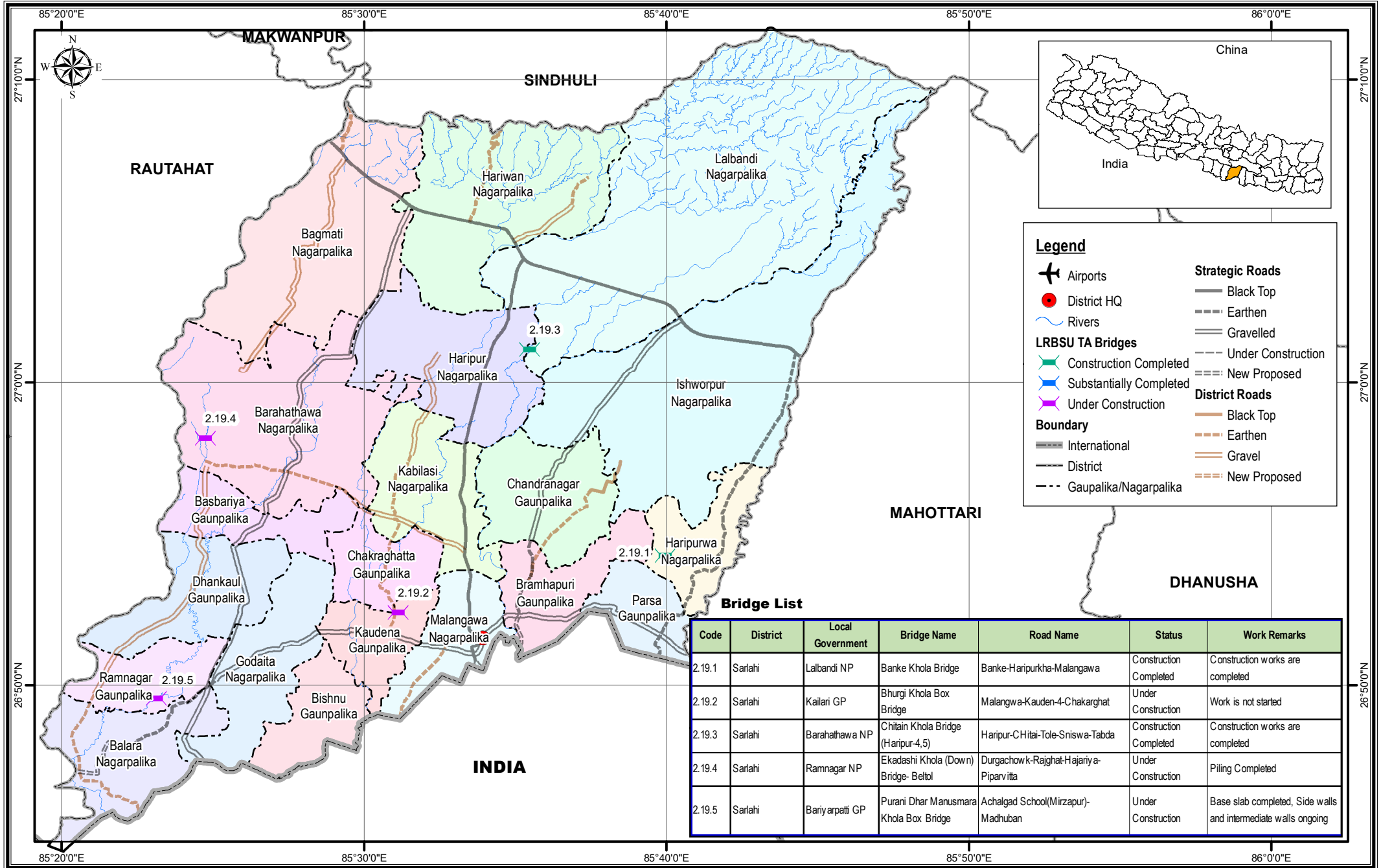


Bridge Inventory Map

Province-2

Sarlahi District



Legend

- Airports
- District HQ
- Rivers
- Construction Completed
- Substantially Completed
- Under Construction
- International Boundary
- District Boundary
- Gaupalika/Nagarpalika Boundary
- Strategic Roads - Black Top
- Strategic Roads - Earthen
- Strategic Roads - Gravelled
- Strategic Roads - Under Construction
- Strategic Roads - New Proposed
- District Roads - Black Top
- District Roads - Earthen
- District Roads - Gravel
- District Roads - New Proposed

Bridge List

Code	District	Local Government	Bridge Name	Road Name	Status	Work Remarks
2.19.1	Sarlahi	Lalbandi NP	Banke Khola Bridge	Banke-Haripurkha-Malangawa	Construction Completed	Construction works are completed
2.19.2	Sarlahi	Kailari GP	Bhurgi Khola Box Bridge	Malangwa-Kaudena-4-Chakarghat	Under Construction	Work is not started
2.19.3	Sarlahi	Barahathawa NP	Chitain Khola Bridge (Haripur-4,5)	Haripur-CHitai-Tole-Sniswa-Tabda	Construction Completed	Construction works are completed
2.19.4	Sarlahi	Ramnagar NP	Ekadashi Khola (Down) Bridge- Beltol	Durgachowk-Rajghat-Hajariya-Piparvitta	Under Construction	Piling Completed
2.19.5	Sarlahi	Bariyapati GP	Purani Dhar Manusmara Khola Box Bridge	Achalgad School(Mirzapur)-Madhuban	Under Construction	Base slab completed, Side walls and intermediate walls ongoing



Local Roads Bridge Support Unit (LRBSU)
Manbawan, Lalitpur

Date: October 2020