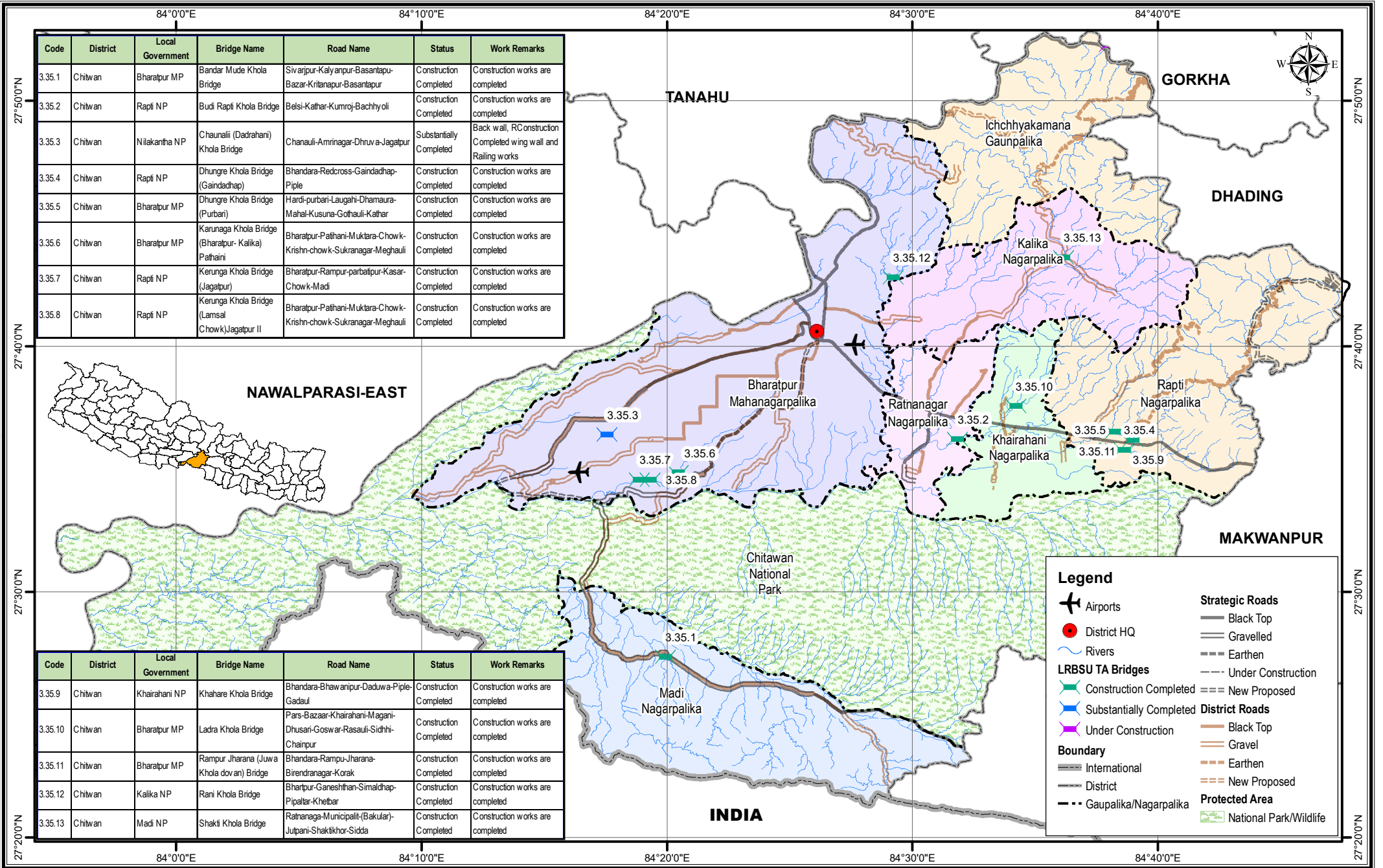


# Bridge Inventory Map

# Bagmati Province

# Chitwan District



Code	District	Local Government	Bridge Name	Road Name	Status	Work Remarks
3.35.1	Chitwan	Bharatpur MP	Bandar Mude Khola Bridge	Sivarajpur-Kalyanpur-Basantapur-Bazar-Kritanapur-Basantapur	Construction Completed	Construction works are completed
3.35.2	Chitwan	Rapti NP	Budi Rapti Khola Bridge	Belsi-Kathar-Kumroj-Bachyoli	Construction Completed	Construction works are completed
3.35.3	Chitwan	Nilakantha NP	Chanauli (Dadrahani) Khola Bridge	Chanauli-Aminnagar-Dhruva-Jagatpur	Substantially Completed	Back wall, RC construction Completed wing wall and Railing works
3.35.4	Chitwan	Rapti NP	Dhungre Khola Bridge (Gaindadhap)	Bhandara-Redcross-Gaindadhap-Piple	Construction Completed	Construction works are completed
3.35.5	Chitwan	Bharatpur MP	Dhungre Khola Bridge (Purbari)	Hardi-purbari-Laugahi-Dhamaura-Mahal-Kusuna-Gofhauri-Kathar	Construction Completed	Construction works are completed
3.35.6	Chitwan	Bharatpur MP	Karunaga Khola Bridge (Bharatpur- Kalika) Pathani	Bharatpur-Pathani-Muktara-Chowk-Krishn-chowk-Sukranagar-Meghauri	Construction Completed	Construction works are completed
3.35.7	Chitwan	Rapti NP	Kerunga Khola Bridge (Jagalpur)	Bharatpur-Rampur-parbatipur-Kasar-Chowk-Madi	Construction Completed	Construction works are completed
3.35.8	Chitwan	Rapti NP	Kerunga Khola Bridge (Lamsal Chowk),Jagalpur II	Bharatpur-Pathani-Muktara-Chowk-Krishn-chowk-Sukranagar-Meghauri	Construction Completed	Construction works are completed

Code	District	Local Government	Bridge Name	Road Name	Status	Work Remarks
3.35.9	Chitwan	Khairahani NP	Khahare Khola Bridge	Bhandara-Bhawanipur-Daduwa-Piple-Gadaul	Construction Completed	Construction works are completed
3.35.10	Chitwan	Bharatpur MP	Ladra Khola Bridge	Pars-Bazaar-Khairahani-Magani-Dhusari-Goswar-Rasauli-Sidhi-Chainpur	Construction Completed	Construction works are completed
3.35.11	Chitwan	Bharatpur MP	Rampur Jharana (Juwa Khola dov an) Bridge	Bhandara-Rampu-Jharana-Birendranagar-Korak	Construction Completed	Construction works are completed
3.35.12	Chitwan	Kalika NP	Rani Khola Bridge	Bharatpur-Ganeshthan-Simaldhap-Pipaltar-Khetbar	Construction Completed	Construction works are completed
3.35.13	Chitwan	Madi NP	Shakti Khola Bridge	Rathanaga-Municipaliti-(Bakular)-Jutpani-Shaktikhor-Sidda	Construction Completed	Construction works are completed

**Legend**

- Airports
- District HQ
- Rivers
- National Park/Wildlife
- Strategic Roads
  - Black Top
  - Gravelled
  - Earthen
  - Under Construction
  - New Proposed
- LRBSU TA Bridges
  - Construction Completed
  - Substantially Completed
  - Under Construction
  - New Proposed
- District Roads
  - Black Top
  - Gravel
  - Earthen
  - New Proposed
- Boundary
  - International
  - District
  - Gaupalika/Nagarpalika
- Protected Area

