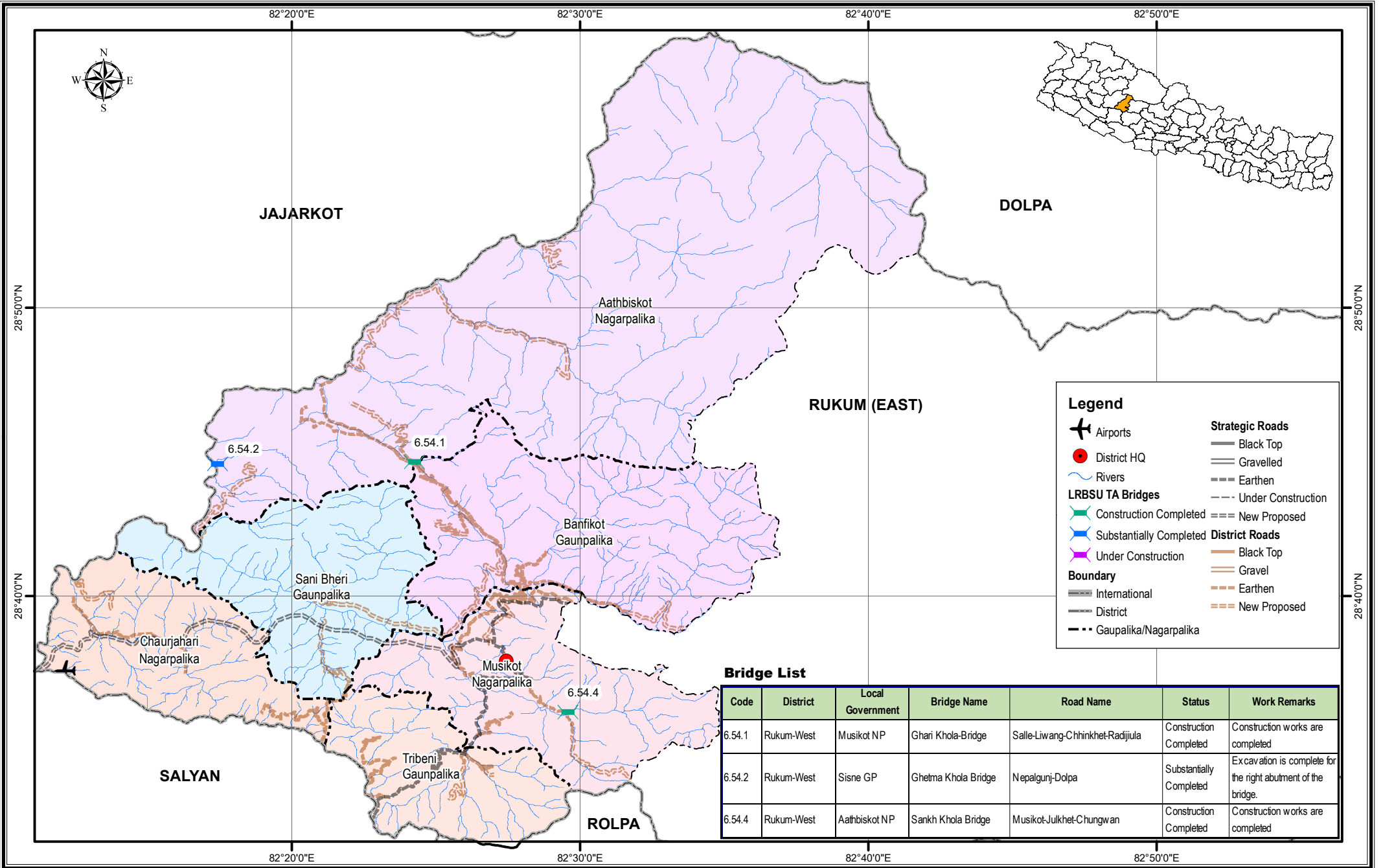


Bridge Inventory Map

Karnali Province

Rukum (West) District



Legend

- Airports
- District HQ
- Rivers
- LRBSU TA Bridges
 - Construction Completed
 - Substantially Completed
 - Under Construction
- Boundary
 - International
 - District
 - Gaunpalika/Nagarpalika
- Strategic Roads
 - Black Top
 - Gravelled
 - Earthen
 - Under Construction
 - New Proposed
- District Roads
 - Black Top
 - Gravel
 - Earthen
 - New Proposed

Bridge List

Code	District	Local Government	Bridge Name	Road Name	Status	Work Remarks
6.54.1	Rukum-West	Musikot NP	Ghari Khola-Bridge	Salle-Liwang-Chhinkhet-Radijiula	Construction Completed	Construction works are completed
6.54.2	Rukum-West	Sisne GP	Ghetma Khola Bridge	Nepalgunj-Dolpa	Substantially Completed	Excavation is complete for the right abutment of the bridge.
6.54.4	Rukum-West	Aathbiskot NP	Sankh Khola Bridge	Musikot-Julkhet-Chungwan	Construction Completed	Construction works are completed

