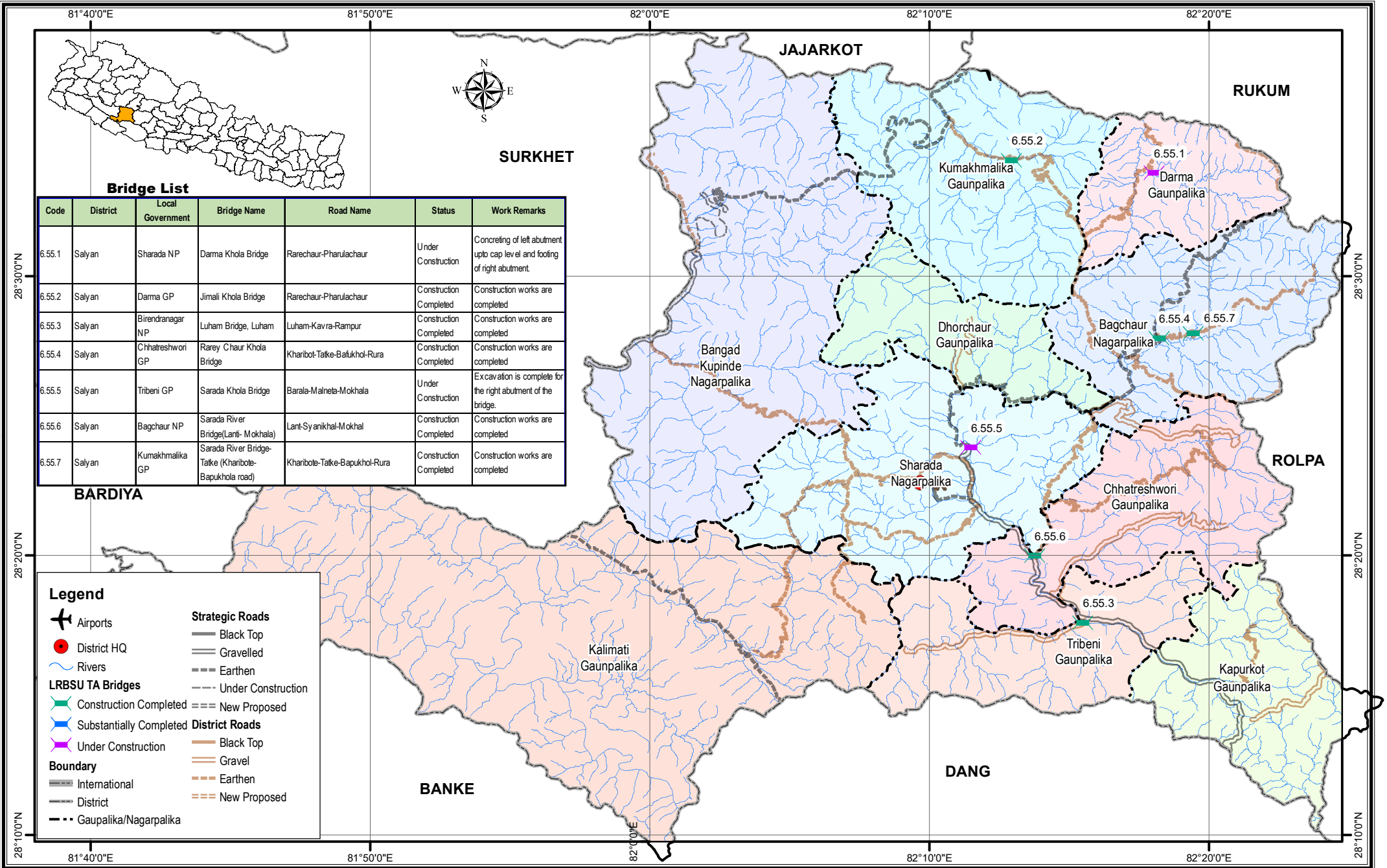


Bridge Inventory Map

Karnali Province

Salyan District



Bridge List

Code	District	Local Government	Bridge Name	Road Name	Status	Work Remarks
6.55.1	Salyan	Sharada NP	Darma Khola Bridge	Rarechaur-Pharulachaur	Under Construction	Concreting of left abutment upto cap level and footing of right abutment.
6.55.2	Salyan	Darma GP	Jimali Khola Bridge	Rarechaur-Pharulachaur	Construction Completed	Construction works are completed
6.55.3	Salyan	Birendranagar NP	Luham Bridge, Luham	Luham-Kavra-Rampur	Construction Completed	Construction works are completed
6.55.4	Salyan	Chhatreshwori GP	Rarey Chaur Khola Bridge	Kharibot-Talke-Bafukhol-Rura	Construction Completed	Construction works are completed
6.55.5	Salyan	Tribeni GP	Sarada Khola Bridge	Barala-Malneta-Mokhala	Under Construction	Excavation is complete for the right abutment of the bridge.
6.55.6	Salyan	Bagchaur NP	Sarada River Bridge(Lanti- Mokhala)	Lanti-Syanikhal-Mokhal	Construction Completed	Construction works are completed
6.55.7	Salyan	Kumakhmalika GP	Sarada River Bridge-Talke (Kharibote-Bapukhola road)	Kharibote-Talke-Bapukhol-Rura	Construction Completed	Construction works are completed

Legend

- Airports
- District HQ
- Rivers
- LRBSU TA Bridges**
 - Construction Completed
 - Substantially Completed
 - Under Construction
- Boundary**
 - International
 - District
 - Gaunpalika/Nagarpalika
- Strategic Roads**
 - Black Top
 - Gravelled
 - Earthen
 - Under Construction
 - New Proposed
- District Roads**
 - Black Top
 - Gravel
 - Earthen
 - New Proposed



Local Roads Bridge Support Unit (LRBSU)
Manbhawan, Lalitpur

Date: October 2020