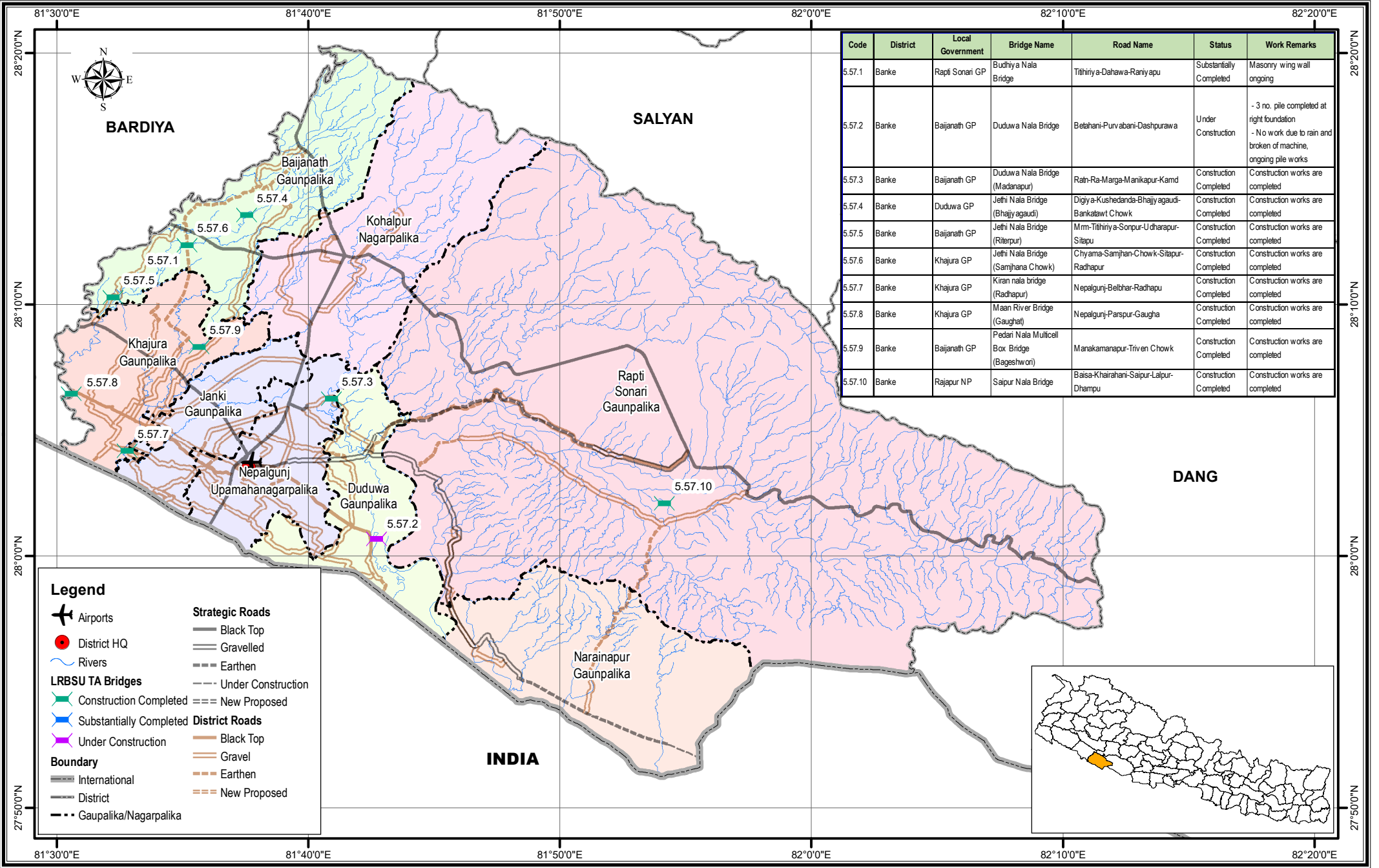


Bridge Inventory Map

Province-5

Banke District



Code	District	Local Government	Bridge Name	Road Name	Status	Work Remarks
5.57.1	Banke	Rapti Sonari GP	Budhiya Nala Bridge	Tithiriya-Dahawa-Raniyapu	Substantially Completed	Masonry wing wall ongoing
5.57.2	Banke	Baijanath GP	Duduwa Nala Bridge	Belahani-Purvabani-Dashpurawa	Under Construction	- 3 no. pile completed at right foundation - No work due to rain and broken of machine, ongoing pile works
5.57.3	Banke	Baijanath GP	Duduwa Nala Bridge (Madanapur)	Rain-Ra-Marga-Manikapur-Kamd	Construction Completed	Construction works are completed
5.57.4	Banke	Duduwa GP	Jethi Nala Bridge (Bhajiya gaudi)	Digiya-Kushedanda-Bhajiya gaudi-Bankatawt Chowk	Construction Completed	Construction works are completed
5.57.5	Banke	Baijanath GP	Jethi Nala Bridge (Rierpur)	Mrm-Tithiriya-Sonpur-Udharapur-Sitapu	Construction Completed	Construction works are completed
5.57.6	Banke	Khajura GP	Jethi Nala Bridge (Samjhana Chowk)	Chiyama-Samjhana-Chowk-Sitapur-Radhapur	Construction Completed	Construction works are completed
5.57.7	Banke	Khajura GP	Kiran nala bridge (Radhapur)	Nepalgunj-Belbhar-Radhapu	Construction Completed	Construction works are completed
5.57.8	Banke	Khajura GP	Maan River Bridge (Gaughat)	Nepalgunj-Parspur-Gaughat	Construction Completed	Construction works are completed
5.57.9	Banke	Baijanath GP	Pedari Nala Multicell Box Bridge (Bageshwori)	Manakamanapur-Triven Chowk	Construction Completed	Construction works are completed
5.57.10	Banke	Rajapur NP	Saipur Nala Bridge	Baisa-Khairahani-Saipur-Lalpur-Dhampur	Construction Completed	Construction works are completed

Legend

- Airports
- District HQ
- Rivers
- LRBSU TA Bridges
 - Construction Completed
 - Substantially Completed
 - Under Construction
- Boundary
 - International
 - District
 - Gaupalika/Nagarpalika
- Strategic Roads
 - Black Top
 - Gravelled
 - Earthen
 - Under Construction
 - New Proposed
- District Roads
 - Black Top
 - Gravel
 - Earthen
 - New Proposed

