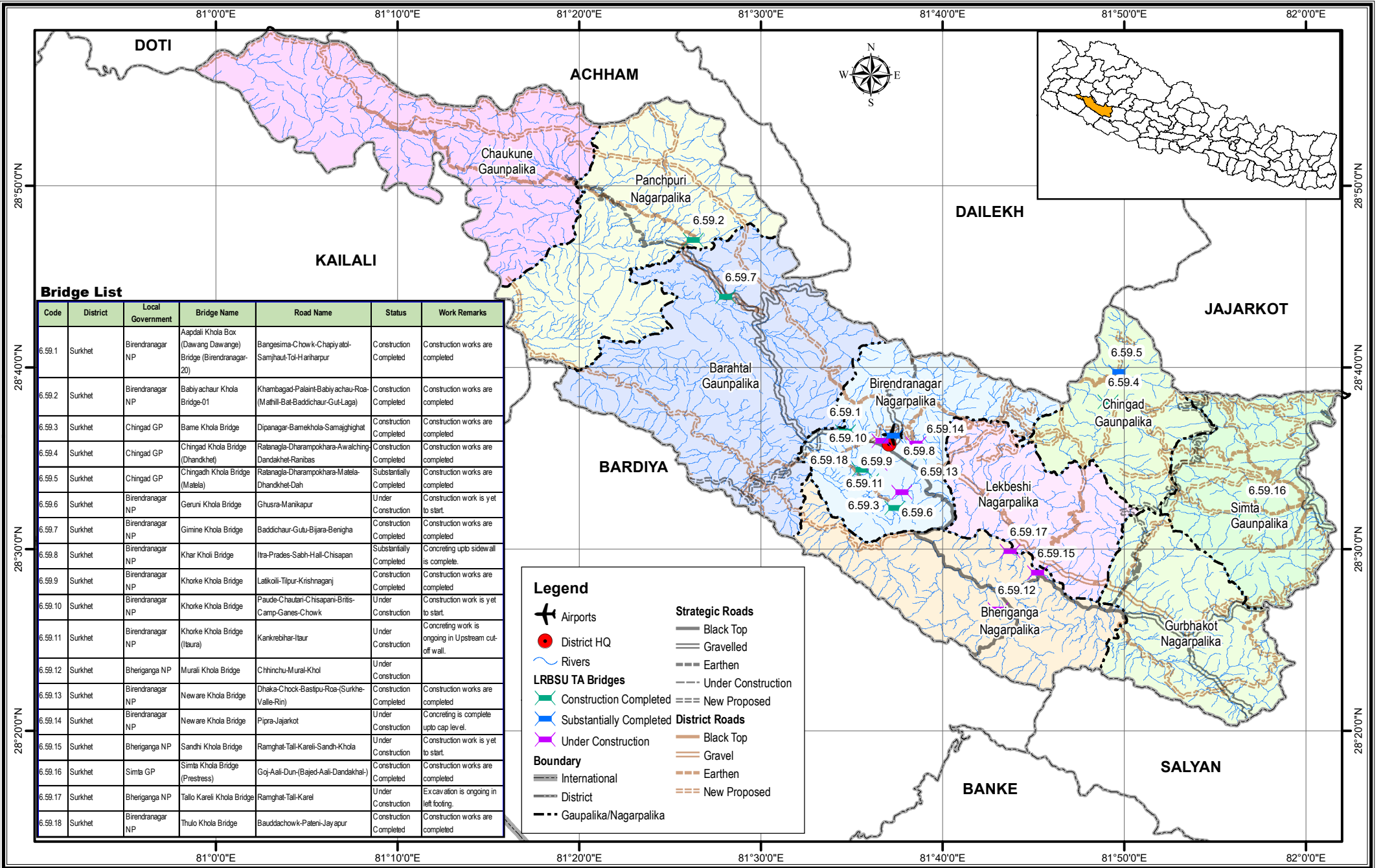


# Bridge Inventory Map

# Karnali Province

# Surkhet District



### Bridge List

Code	District	Local Government	Bridge Name	Road Name	Status	Work Remarks
6.59.1	Surkhet	Birendranagar NP	Aapdali Khola Box (Dawang Dawange) Bridge (Birendranagar-20)	Bangesima-Chowk-Chapiyati-Samjhaut-Tol-Harharpur	Construction Completed	Construction works are completed
6.59.2	Surkhet	Birendranagar NP	Babiyachau Khola Bridge-01	Khambagad-Palain-Babiyachau-Roa (Mahil-Bat-Baddichaur-Gul-Laga)	Construction Completed	Construction works are completed
6.59.3	Surkhet	Chingad GP	Bame Khola Bridge	Dipnagar-Bamekhola-Samaighat	Construction Completed	Construction works are completed
6.59.4	Surkhet	Chingad GP	Chingad Khola Bridge (Dhandkhet)	Ralanaga-Dharampokhara-Awalching Dandakhet-Ranibas	Construction Completed	Construction works are completed
6.59.5	Surkhet	Chingad GP	Chingadh Khola Bridge (Matele)	Ralanaga-Dharampokhara-Matele-Dhandkhet-Dah	Substantially Completed	Construction works are completed
6.59.6	Surkhet	Birendranagar NP	Geruni Khola Bridge	Ghusra-Manikapur	Under Construction	Construction work is yet to start.
6.59.7	Surkhet	Birendranagar NP	Gimine Khola Bridge	Baddichaur-Gutu-Bijara-Benigha	Construction Completed	Construction works are completed
6.59.8	Surkhet	Birendranagar NP	Khar Kholi Bridge	Utra-Prades-Sabh-Hall-Chisapan	Substantially Completed	Concreting upto sidewalk is complete.
6.59.9	Surkhet	Birendranagar NP	Khorke Khola Bridge	Lalikoli-Tipur-Krishnagarj	Construction Completed	Construction works are completed
6.59.10	Surkhet	Birendranagar NP	Khorke Khola Bridge	Paude-Chautari-Chisapani-Britis-Camp-Ganes-Chowk	Under Construction	Construction work is yet to start.
6.59.11	Surkhet	Birendranagar NP	Khorke Khola Bridge (Iaura)	Kankrebihar-Iaur	Under Construction	Concreting work is ongoing in Upstream cut-off wall.
6.59.12	Surkhet	Bheriganga NP	Murali Khola Bridge	Chinchu-Mural-Khol	Under Construction	
6.59.13	Surkhet	Birendranagar NP	Neware Khola Bridge	Dhaka-Chook-Bastpu-Roa-(Surkhe-Valle-Rin)	Construction Completed	Construction works are completed
6.59.14	Surkhet	Birendranagar NP	Neware Khola Bridge	Pipra-Jajarkot	Under Construction	Concreting is complete upto cap lev. l.
6.59.15	Surkhet	Bheriganga NP	Sandhi Khola Bridge	Ramghat-Tali-Kareli-Sandh-Khola	Under Construction	Construction work is yet to start.
6.59.16	Surkhet	Simta GP	Simta Khola Bridge (Prestress)	Gaj-Aali-Dun-(Bajed-Aali-Dandakhal)	Construction Completed	Construction works are completed
6.59.17	Surkhet	Bheriganga NP	Tallo Kareli Khola Bridge	Ramghat-Tali-Kareli	Under Construction	Excavation is ongoing in left footing.
6.59.18	Surkhet	Birendranagar NP	Thulo Khola Bridge	Baudachowk-Patani-Jayapur	Construction Completed	Construction works are completed

### Legend

- Airports
- District HQ
- Rivers
- Construction Completed
- Substantially Completed
- Under Construction
- International Boundary
- District Boundary
- Gaunpalika/Nagarpalika Boundary
- Strategic Roads**
  - Black Top
  - Gravelled
  - Earthen
  - Under Construction
  - New Proposed
- LRBSU TA Bridges**
  - Construction Completed
  - Substantially Completed
  - Under Construction
- District Roads**
  - Black Top
  - Gravel
  - Earthen
  - New Proposed

