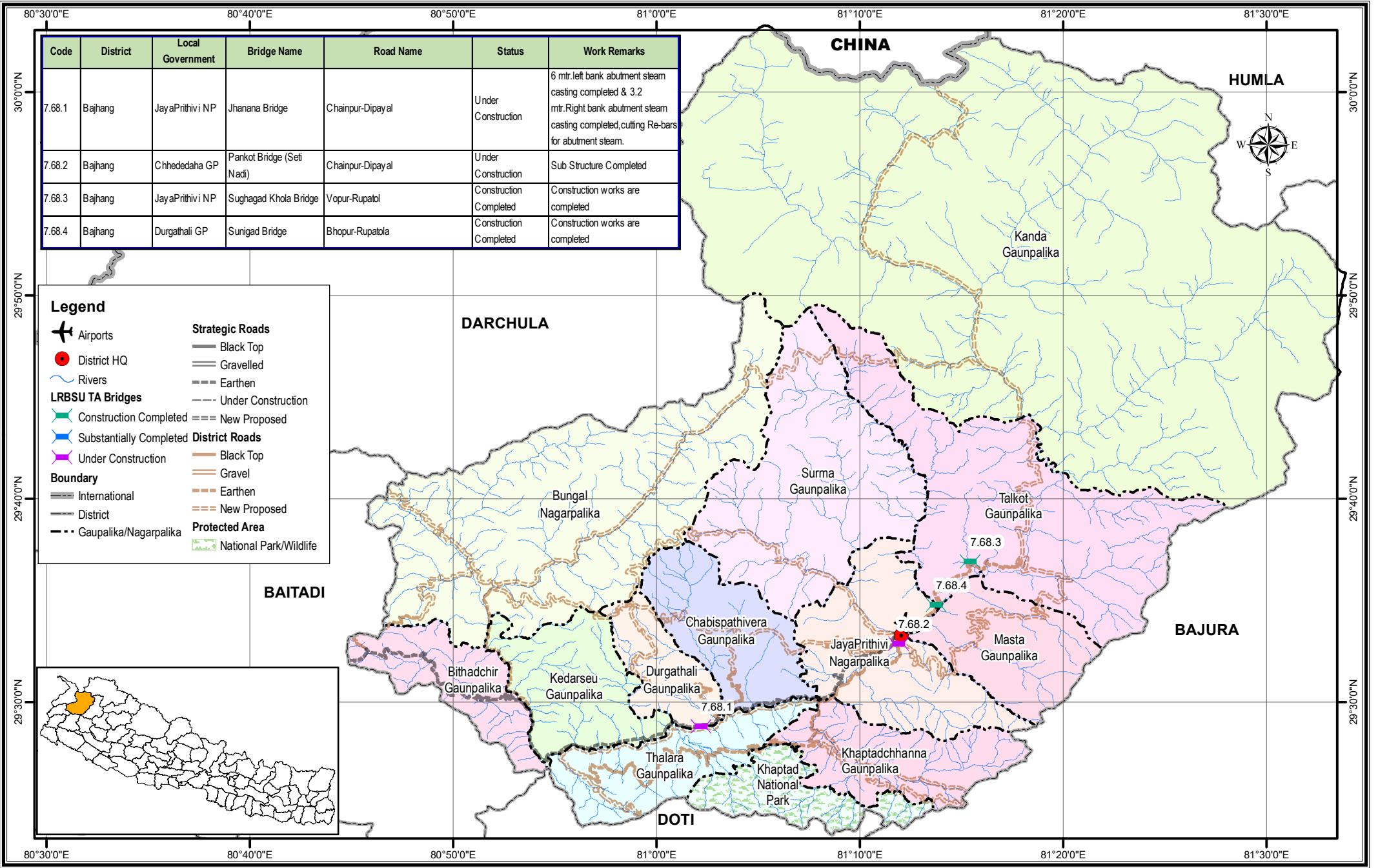


Bridge Inventory Map

Sudur Paschim Province

Bajhang District



Code	District	Local Government	Bridge Name	Road Name	Status	Work Remarks
7.68.1	Bajhang	JayaPrithivi NP	Jhanana Bridge	Chainpur-Dipayal	Under Construction	6 mtr. left bank abutment steam casting completed & 3.2 mtr. Right bank abutment steam casting completed, cutting Re-bars for abutment steam.
7.68.2	Bajhang	Chhededaha GP	Pankot Bridge (Seti Nadi)	Chainpur-Dipayal	Under Construction	Sub Structure Completed
7.68.3	Bajhang	JayaPrithivi NP	Sughagad Khola Bridge	Vopur-Rupatol	Construction Completed	Construction works are completed
7.68.4	Bajhang	Durgathali GP	Sunigad Bridge	Bhopur-Rupatola	Construction Completed	Construction works are completed

Legend

- Airports
- District HQ
- Rivers
- LRBSU TA Bridges
 - Construction Completed
 - Substantially Completed
 - Under Construction
- Boundary
 - International
 - District
 - Gaunpalika/Nagarpalika
- Strategic Roads
 - Black Top
 - Gravelled
 - Earthen
 - Under Construction
 - New Proposed
- District Roads
 - Black Top
 - Gravel
 - Earthen
 - New Proposed
- Protected Area
 - National Park/Wildlife

