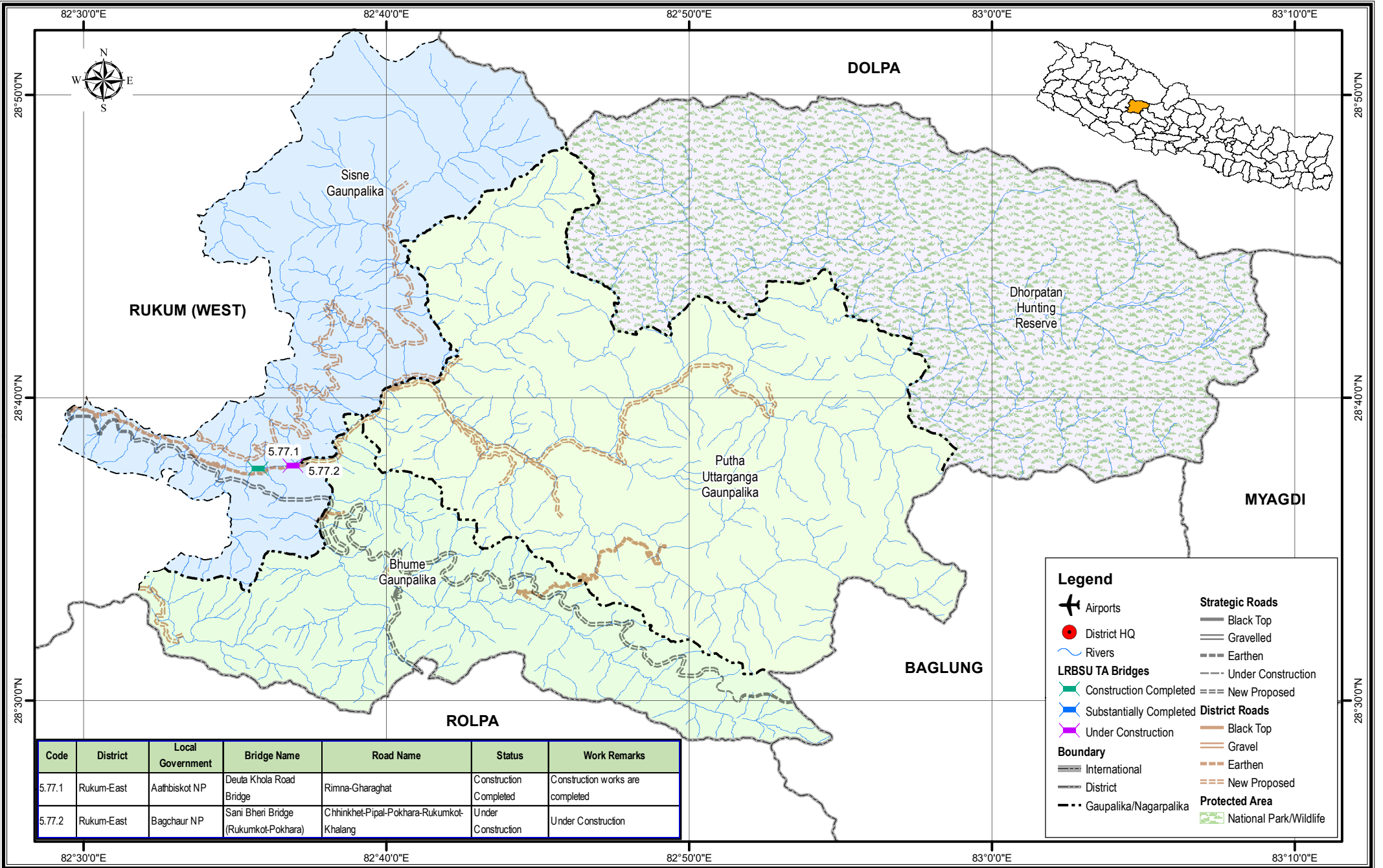


Bridge Inventory Map

Province-5

Rukum (East) District



Code	District	Local Government	Bridge Name	Road Name	Status	Work Remarks
5.77.1	Rukum-East	Aathbiskot NP	Deuta Khola Road Bridge	Rimna-Gharaghat	Construction Completed	Construction works are completed
5.77.2	Rukum-East	Bagchaur NP	Sani Bheri Bridge (Rukumkot-Pokhara)	Chhinkhet-Pipal-Pokhara-Rukumkot-Khalang	Under Construction	Under Construction

Legend

- Airports
- District HQ
- Rivers
- LRBSU TA Bridges
 - Construction Completed
 - Substantially Completed
 - Under Construction
- Boundary
 - International
 - District
 - Gaunpalika/Nagarpalika
- Strategic Roads
 - Black Top
 - Gravelled
 - Earthen
 - Under Construction
 - New Proposed
- District Roads
 - Black Top
 - Gravel
 - Earthen
 - New Proposed
- Protected Area
 - National Park/Wildlife

