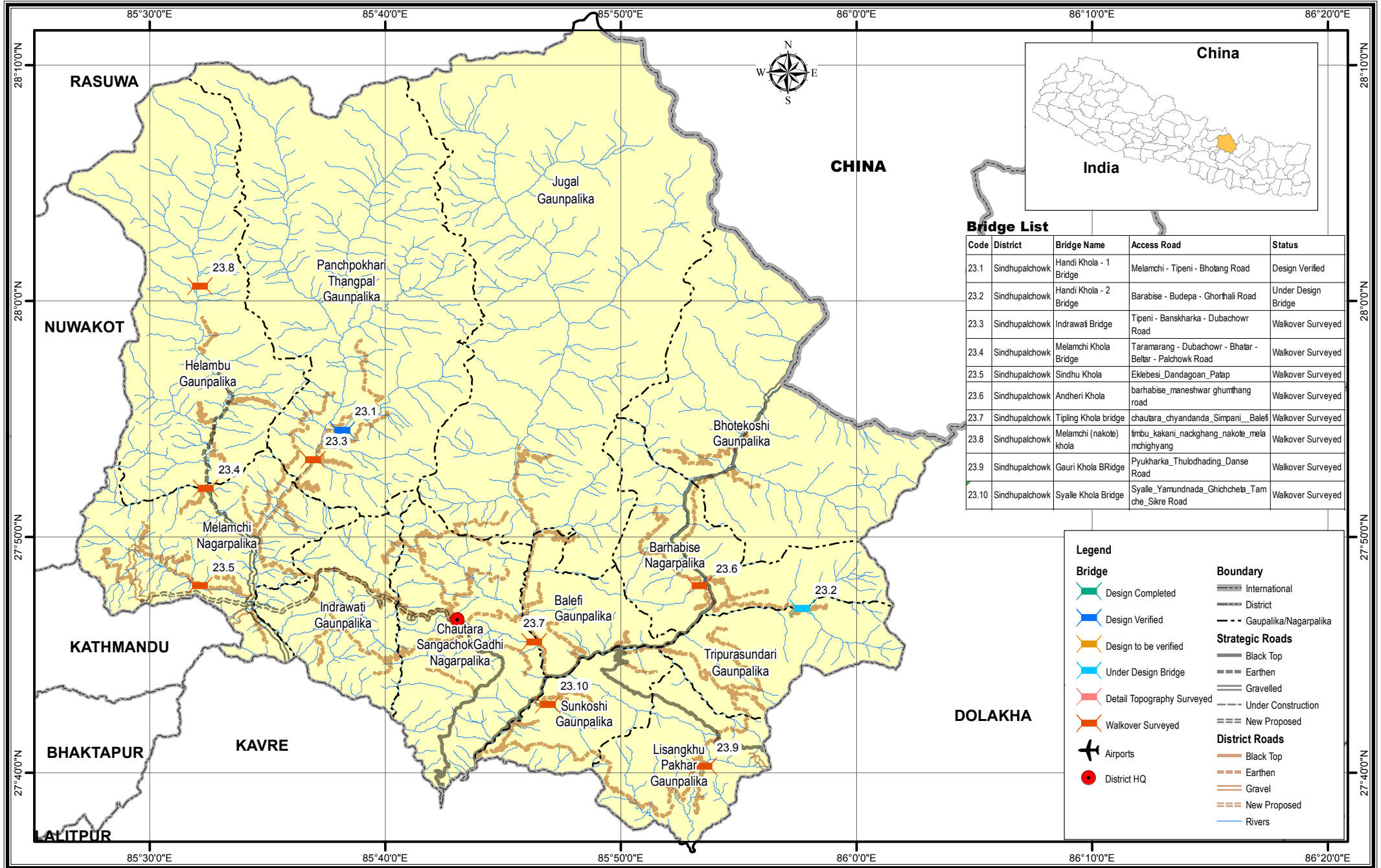


Bridge Inventory Map

Sindhupalchowk District



Bridge List

Code	District	Bridge Name	Access Road	Status
23.1	Sindhupalchowk	Handi Khola - 1 Bridge	Melamchi - Tipeni - Bhotang Road	Design Verified
23.2	Sindhupalchowk	Handi Khola - 2 Bridge	Barabise - Budepa - Ghorhali Road	Under Design Bridge
23.3	Sindhupalchowk	Indrawati Bridge	Tipeni - Banskarka - Dubachowr Road	Walkover Surveyed
23.4	Sindhupalchowk	Melamchi Khola Bridge	Taramarang - Dubachowr - Bhatar - Beltar - Palchowk Road	Walkover Surveyed
23.5	Sindhupalchowk	Sindhu Khola	Eklebesi_Dandagoan_Patap	Walkover Surveyed
23.6	Sindhupalchowk	Andheri Khola	barhabise_maneshwar_gnumthang road	Walkover Surveyed
23.7	Sindhupalchowk	Tiping Khola bridge	chautara_chyandanda_Simpani_Balefi	Walkover Surveyed
23.8	Sindhupalchowk	Melamchi (nakote) khola	timbu_kakani_nackghang_nakote_mela mchighyang	Walkover Surveyed
23.9	Sindhupalchowk	Gauri Khola BRidge	Pyukharka_Thuodhading_Danse Road	Walkover Surveyed
23.10	Sindhupalchowk	Syalle Khola Bridge	Syalle_Yamundnada_Ghichchela_Tam che_Sikre Road	Walkover Surveyed

Legend

Design Completed	International Boundary
Design Verified	District Boundary
Design to be verified	Gaunpalika/Nagarpalika Boundary
Under Design Bridge	Strategic Roads - Black Top
Detail Topography Surveyed	Strategic Roads - Earthen
Walkover Surveyed	Strategic Roads - Gravelled
Airports	Strategic Roads - Under Construction
District HQ	Strategic Roads - New Proposed
	District Roads - Black Top
	District Roads - Earthen
	District Roads - Gravel
	District Roads - New Proposed
	Rivers

