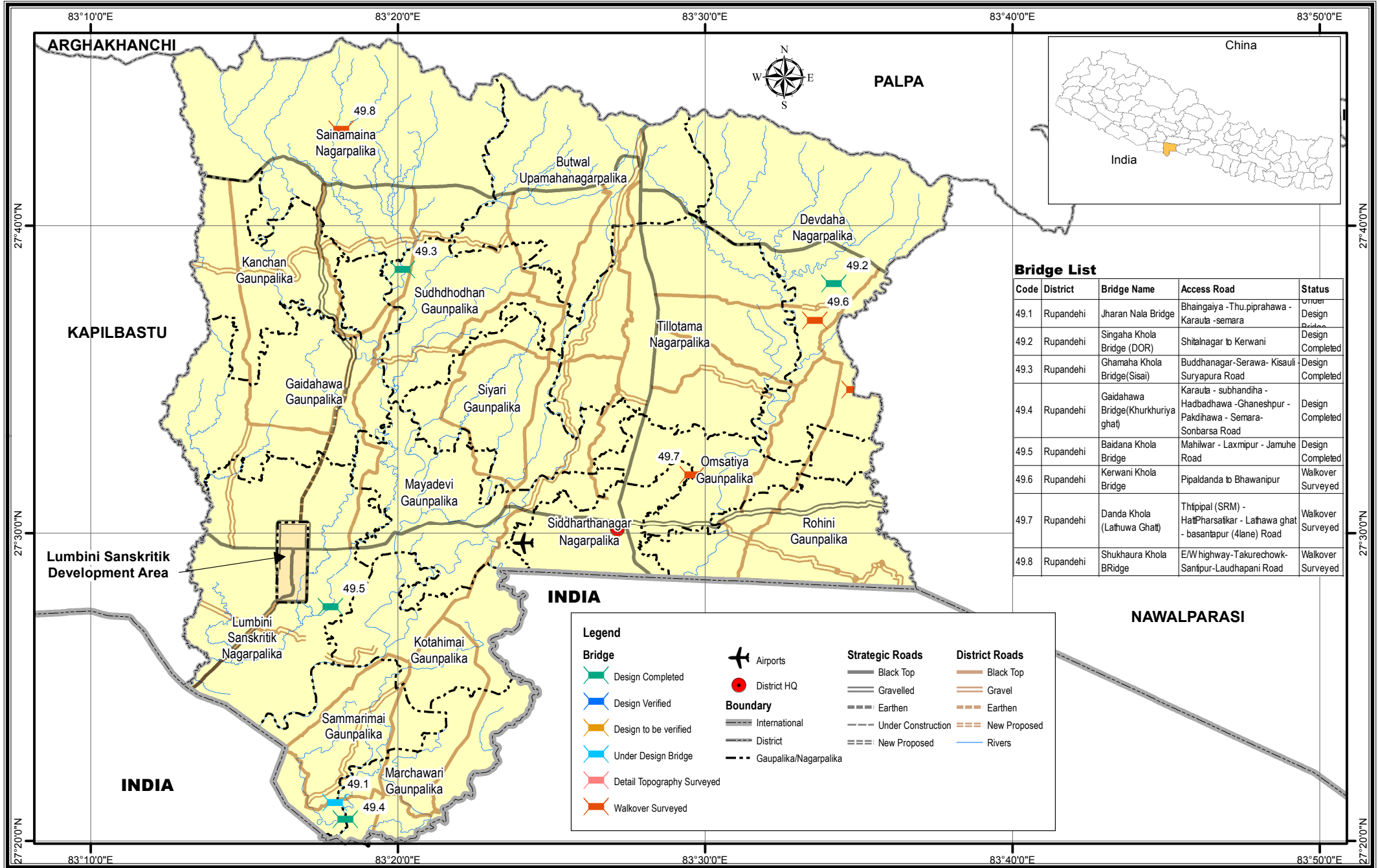


Bridge Inventory Map

Rupandehi District



Bridge List

Code	District	Bridge Name	Access Road	Status
49.1	Rupandehi	Jharan Nala Bridge	Bhaingaiya - Thu.piprahawa - Karauta -semara	Under Design
49.2	Rupandehi	Singaha Khola Bridge (DOR)	Shitalnagar to Kerwani	Design Completed
49.3	Rupandehi	Ghamaha Khola Bridge (Sisai)	Buddhanagar-Serawa- Kisauli Suryapura Road	Design Completed
49.4	Rupandehi	Gaidahawa Bridge (Khurkhuriya ghat)	Karauta - subhandiha - Hadbadhawa - Ghaneshpur - Pakdihawa - Semara - Sonbarsa Road	Design Completed
49.5	Rupandehi	Baidana Khola Bridge	Mahilwar - Laxmpipur - Jamuhe Road	Design Completed
49.6	Rupandehi	Kerwani Khola Bridge	Pipaldanda to Bhawanipur	Walkover Surveyed
49.7	Rupandehi	Danda Khola (Lathuwa Ghat)	Thipipal (SRM) - HatPharsatkar - Lathawa ghat - basantapur (4lane) Road	Walkover Surveyed
49.8	Rupandehi	Shukhaura Khola BRidge	E/W highway-Takurechowk-Santpur-Laudhapani Road	Walkover Surveyed

Legend

Bridge

- Design Completed
- Design Verified
- Design to be verified
- Under Design Bridge
- Detail Topography Surveyed
- Walkover Surveyed

Airports

- Airports

District HQ

- District HQ

Boundary

- International
- District
- Gaunpalika/Nagarpalika

Strategic Roads

- Black Top
- Gravelled
- Earthen
- Under Construction
- New Proposed

District Roads

- Black Top
- Gravel
- Earthen
- New Proposed
- Rivers

