

Bridge Inventory Map

PROVINCE-1

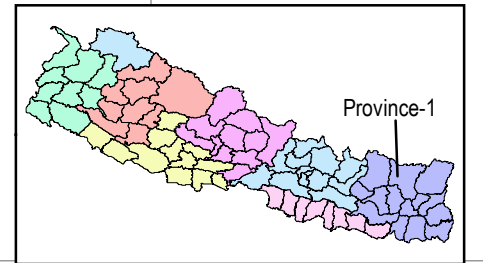
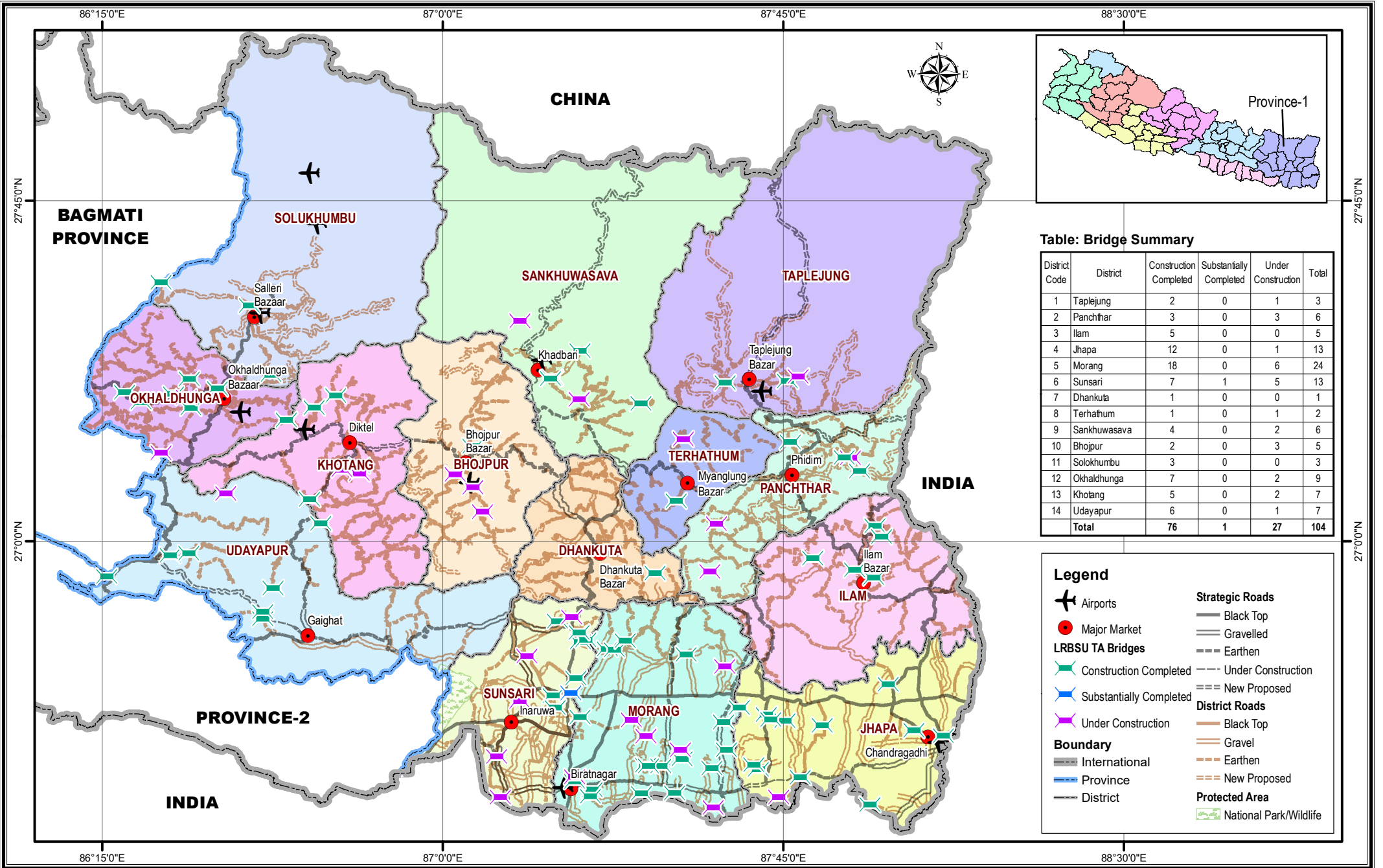


Table: Bridge Summary

District Code	District	Construction Completed	Substantially Completed	Under Construction	Total
1	Taplejung	2	0	1	3
2	Panchthar	3	0	3	6
3	Ilam	5	0	0	5
4	Jhapa	12	0	1	13
5	Morang	18	0	6	24
6	Sunsari	7	1	5	13
7	Dhankuta	1	0	0	1
8	Terhathum	1	0	1	2
9	Sankhuwasava	4	0	2	6
10	Bhojpur	2	0	3	5
11	Solokhumbu	3	0	0	3
12	Okhaldhunga	7	0	2	9
13	Khotang	5	0	2	7
14	Udayapur	6	0	1	7
Total		76	1	27	104

Legend

- Airports
- Major Market
- LRBSU TA Bridges**
 - Construction Completed
 - Substantially Completed
 - Under Construction
- Strategic Roads**
 - Black Top
 - Gravelled
 - Earthen
 - Under Construction
 - New Proposed
- District Roads**
 - Black Top
 - Gravel
 - Earthen
 - New Proposed
- Boundary**
 - International
 - Province
 - District
- Protected Area**
 - National Park/Wildlife

